



177 High Road, London
London

£375,000

177 High Road

London, London

SPACIOUS 3-BED DUPLEX (900 SQ FT) in N11. Features a LARGE RECEPTION, stylish KITCHEN/DINER with butler sink, and GUEST WC. Upstairs offers 3 WELL-PROPORTIONED BEDROOMS and a DESIGNER BATHROOM. Perfectly located for NEW SOUTHGATE & ARNOS GROVE stations.

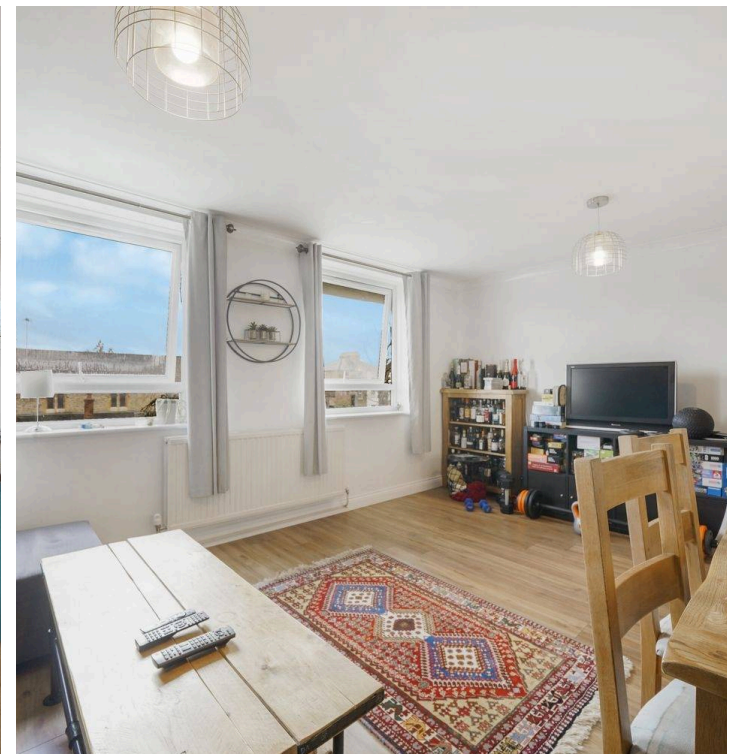
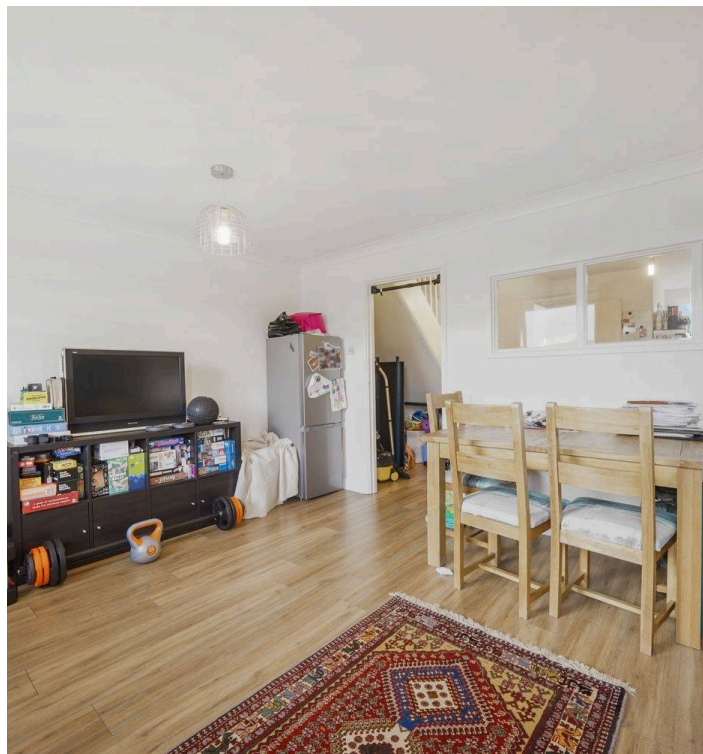
Council Tax band: C

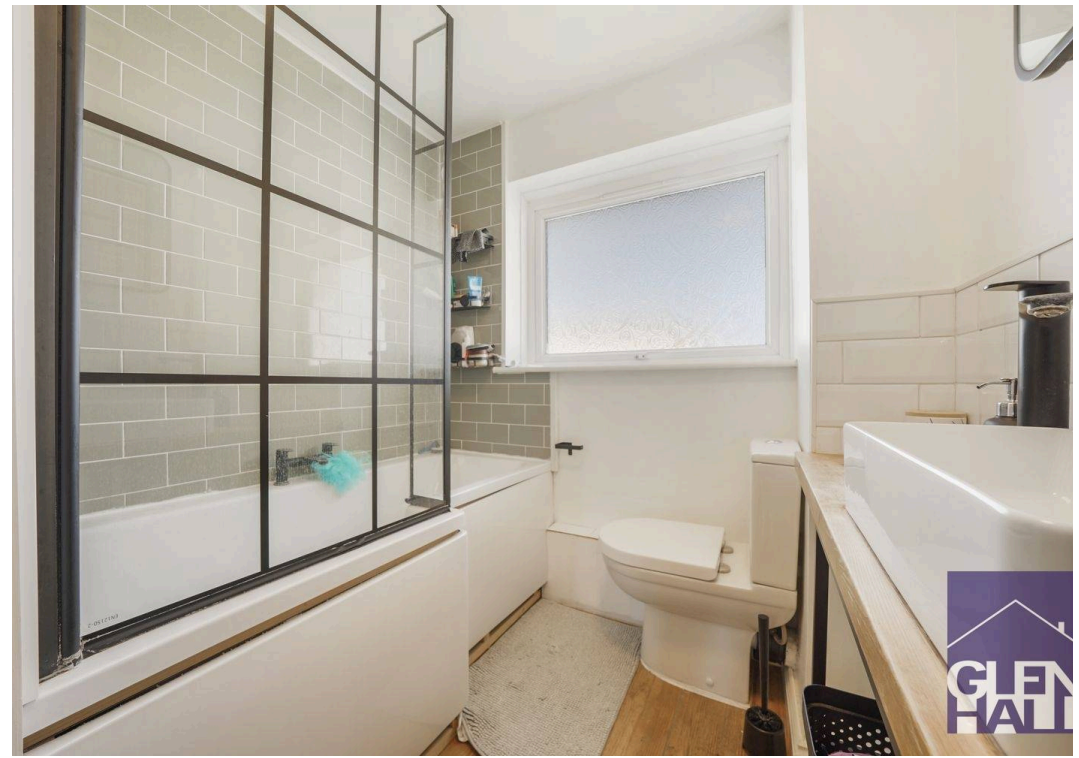
Tenure: Leasehold

EPC Energy Efficiency Rating: C

EPC Environmental Impact Rating: D

- DUPLEX LAYOUT
- GENEROUS ROOM SIZES THROUGHOUT
- APPROX. 900 SQFT OF ACCOMMODATION
- GUEST W/C ON THE GROUND FLOOR
- MODERN BATHROOM SUITE

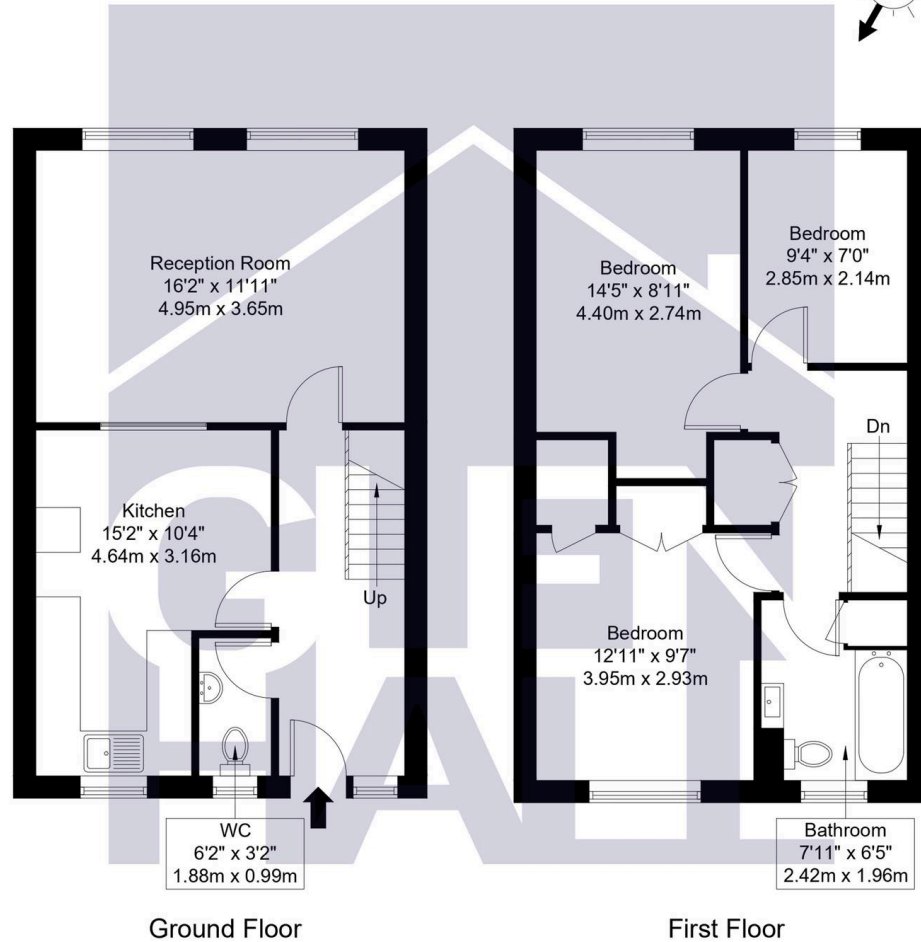
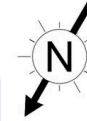






HIGH ROAD N11 1PQ

GROSS INTERNAL AREA - 83.6 sqm / 900 sqft



This floor plan is for illustrative purposes only. It is not drawn to scale. Any measurements, floor areas (including any total floor area), openings and orientation are approximate. No details are guaranteed, they cannot be relied upon for any purpose and they do not form part of any agreement. No liability is taken for any error, omission or misstatement.
A party must rely upon its own inspection(s).





You can include any text here. The text can be modified upon generating your brochure.

